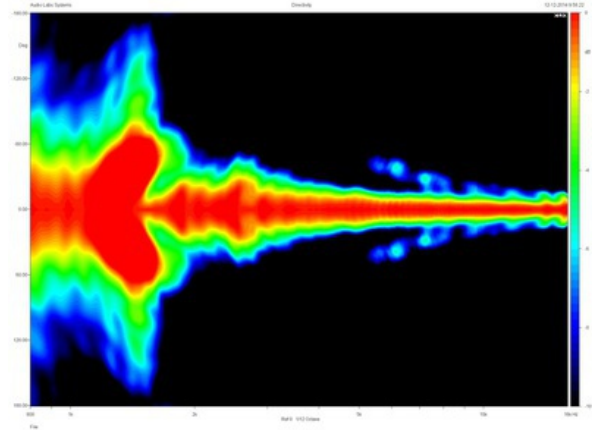
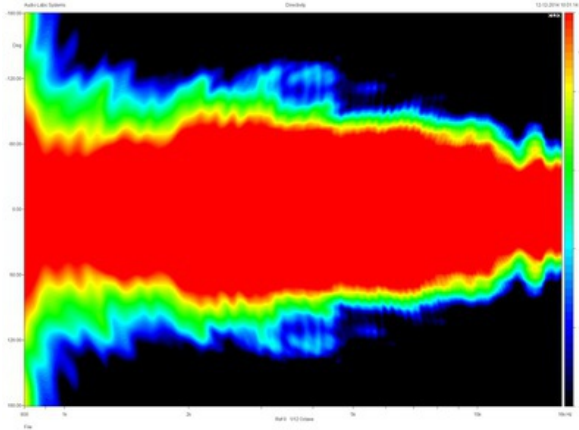


- 1.0" entry line-array source
- 10° vertical coverage angle
- Transmission line acoustical design minimizes internal reflections and acoustical losses
- Throat shape optimized for lowering air distortion
- Compact size for high arrayability
- Die-cast aluminum construction

The XG10 is a 1.0 inch throat entry line-array waveguide. The specific transmission line acoustical design minimizes internal reflections and acoustical losses, while throat shape has been optimized for lowering air distortion. The XG10 has been optimised for obtaining a 10° vertical dispersion angle, while the horizontal coverage angle could vary from 80° to 120° depending on the specific cabinet design. The waveguide has been developed to obtain optimum performances when it will be coupled with 1.0 inch exit Eighteen Sound high frequency compression drivers.



### SPECIFICATIONS

Horizontal Coverage	120 ° Max
Recommended Crossover <sup>1</sup>	1.2 kHz
Waveguide Material	Die-cast Aluminum
Nominal Impedance	0 Ω
Minimum Impedance	0.0 Ω
Nominal Power Handling <sup>2</sup>	0 W
Continuous Power Handling <sup>3</sup>	0 W
Sensitivity <sup>4</sup>	111.0 dB
Frequency Range <sup>5</sup>	1000.0 - 18.0 kHz

### MOUNTING AND SHIPPING INFO

Net Weight	0.4 kg ( lb)
------------	--------------

1. 12 dB/oct. Or higher slope high-pass filter.
2. 2 hour test made with continuous pink noise signal. Power calculated on rated nominal impedance.
3. Power on Continuous Program is defined as 3 dB greater than the Nominal rating.
4. Applied RMS Voltage is set to 2.83 V for 8 ohms Nominal Impedance.
5. Waveguide mounted on 90°x10° bell horn