

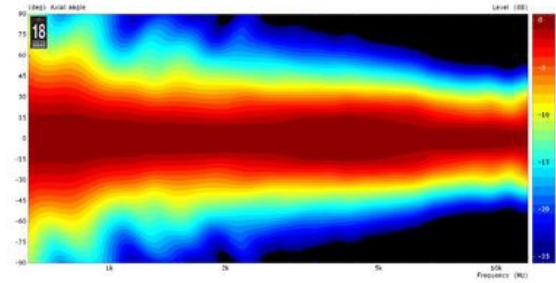
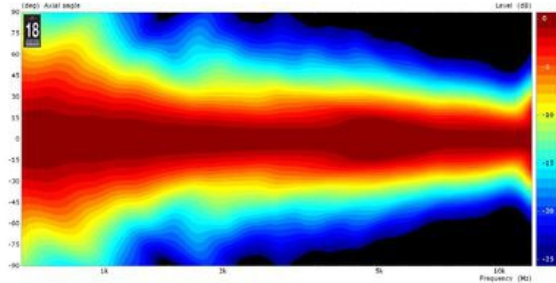
- 1.4 inch throat entry
- Unique Eighteen Sound elliptical shape (ESS)
- Injection moulded polyurethane construction
- Uniform on-axis and off-axis frequency response
- 60° x 50° horizontal and vertical constant coverage
- Very low distortion at high sound pressure levels

Featuring the Eighteen Sound elliptical shape technology (ESS), the XT1464 constant coverage high frequency horn has been developed for use in sound systems, where the highest quality is required. With a 1.4 in throat entry, the XT1464 has been designed to exactly match the Eighteen Sound 1.4 in exit neodymium high frequency compression drivers. The XT1464 maintains nominal 60° Horizontal x 50° Vertical pattern control. It provides consistent on-axis and off-axis frequency response from 800Hz to 15kHz in the horizontal plane and from 1,5kHz to 15kHz in the vertical plane. Horn directivity is constant from 1.5kHz. Thanks to its compact vertical mouth dimensions, the XT1464 can easily be staked vertically when lower frequency control is required. The horn structure made from high-pressure die-cast polyurethane foam eliminates resonance and vibrations and assures maximum strength. The XT1464 provides low distortion and a spherical wave-front, avoiding reflections and other disadvantages usually associated with diffraction horns. The horn contours were developed using Computer Aided Finite Element Analysis.



# XT1464

Horns - 1.4 Inches



## SPECIFICATIONS

Throat Diameter	35 mm (1.4 in)
Nominal Coverage Horizontal	60 °
Nominal Coverage Vertical	50 °
Cutoff Frequency	0.5 kHz
Dimensions	380x304x257 mm (14.96x11.97x10.12 in)

## MOUNTING AND SHIPPING INFO

Net Weight	1.4 kg (3.09 lb)
Shipping Weight	0.0 kg ( lb)