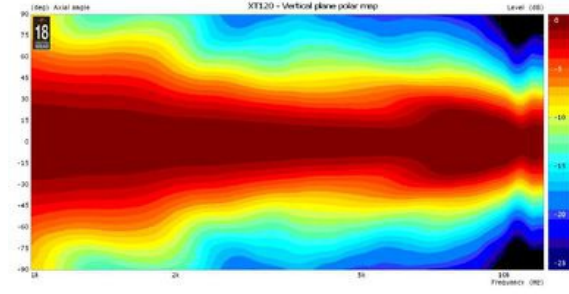
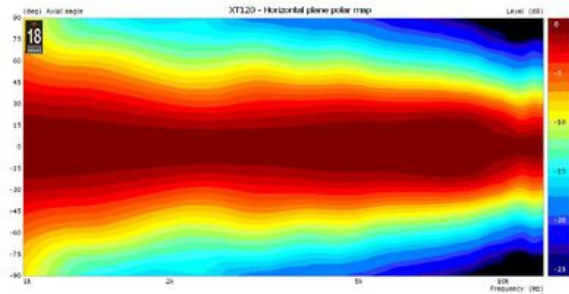


- 1 inch entry
- Unique Eighteen Sound elliptical shape (ESS)
- Flat front and compact size
- Injection moulded polyurethane construction
- Uniform on-axis and off-axis frequency response
- 90° x 60° horizontal and vertical constant coverage

Featuring the unique Eighteen Sound elliptical shape, the XT120 Constant Coverage High Frequency Horn has been designed for use in sound systems where top quality is required. With a 1" throat entry diameter, the XT120 has been designed to match the Eighteen Sound 1 inch exit high frequency compression drivers family. The XT120 maintains nominal 90° Horizontal x 60° Vertical pattern control, providing constant on-axis and off-axis frequency response from 2kHz to 16kHz in the horizontal plane and from 2.5kHz to 16kHz in the vertical plane. The XT120 smooth flare rate provides constant directivity from 2.5kHz, low distortion and a spherical wave front, avoiding the typical reflections usually associated with diffraction horns. The XT120 is made from high pressure injection moulded polyurethane foam and has been designed to be free of resonance and vibrations in order to assure maximum strength. Computer Aided Finite Element Analysis, as well as extensive testing were used to obtain the horn contours.



### SPECIFICATIONS

Throat Diameter	25 mm (1.0 in)
Nominal Coverage Horizontal	90 °
Nominal Coverage Vertical	60 °
Cutoff Frequency	1.5 kHz
Material	Injection moulded Polyurethane
Design	Elliptical shape
Dimensions	200x150x103 mm (7.87x5.91x4.06 in)

### MOUNTING AND SHIPPING INFO

Net Weight	350.0 kg (771.62 lb)
------------	----------------------